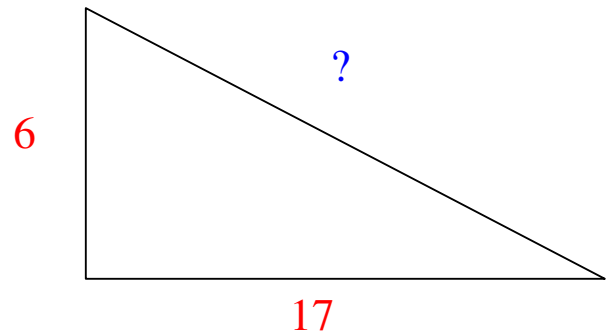
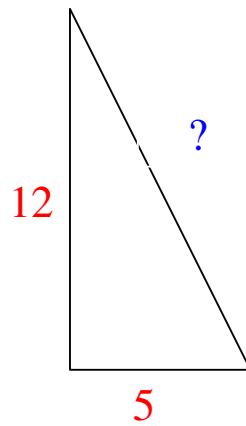
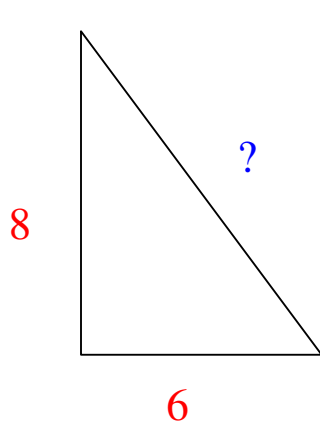
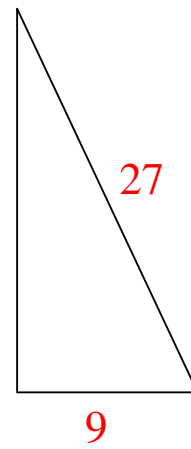
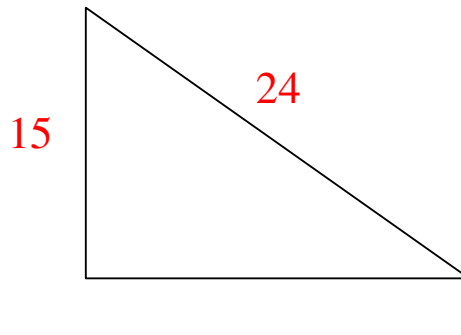
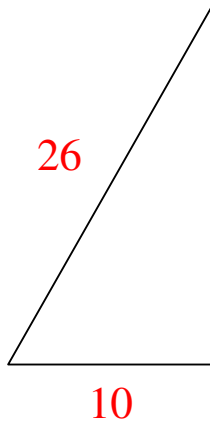


Pythagoras' Theorem - Test

1. Calculate the hypotenuse of these right-angle triangles:



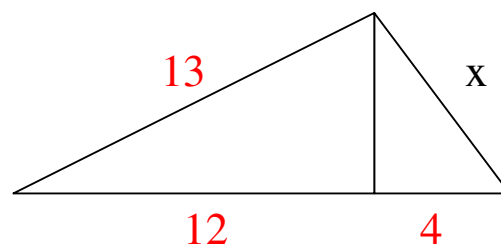
2. Calculate the unknown side of these right-angle triangles:



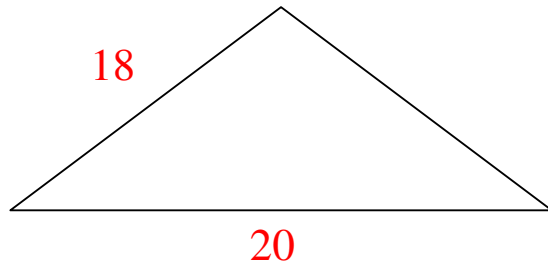
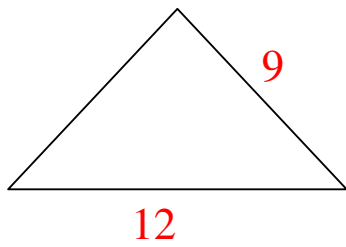
3. Which of these are right-angle triangles?

- a) The lengths of the three sides are 5, 12 & 13
- b) The lengths of the three sides are 6, 12 & 15
- c) The lengths of the three sides are 6, 8 & 10

4. Calculate the x length.



4. Calculate the heights of these isosceles triangles:



5. Sue is flying a kite on a string that is 70 metres long. Her boyfriend, Alan, is standing a distance of 30 meters in front of Sue and is directly under the kite. How high is the kite?

6. The longest side of a right-angle, isosceles triangle is 20 cm in length. What are the lengths of the other two sides?

